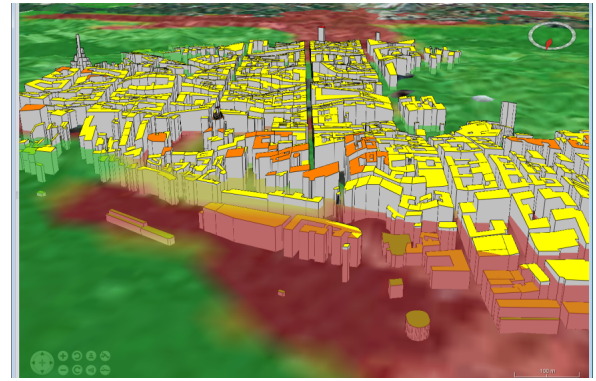
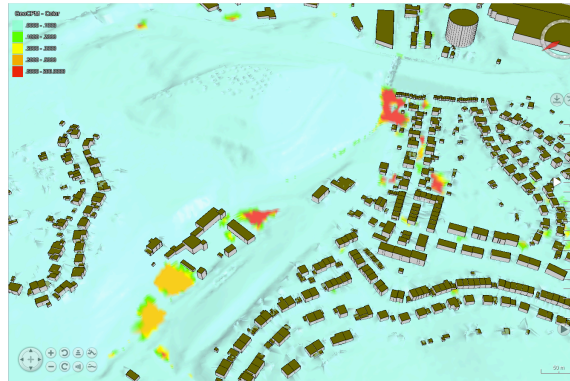
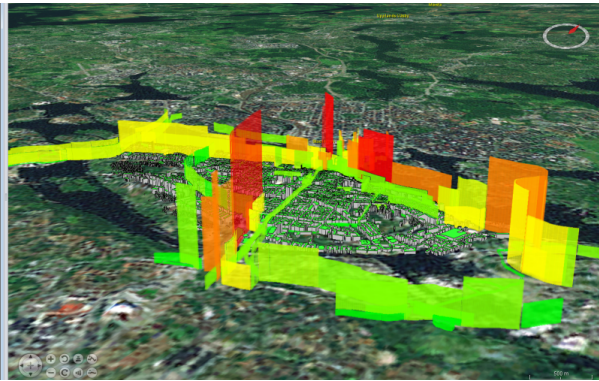


Advanced Visualisation in SUDPLAN

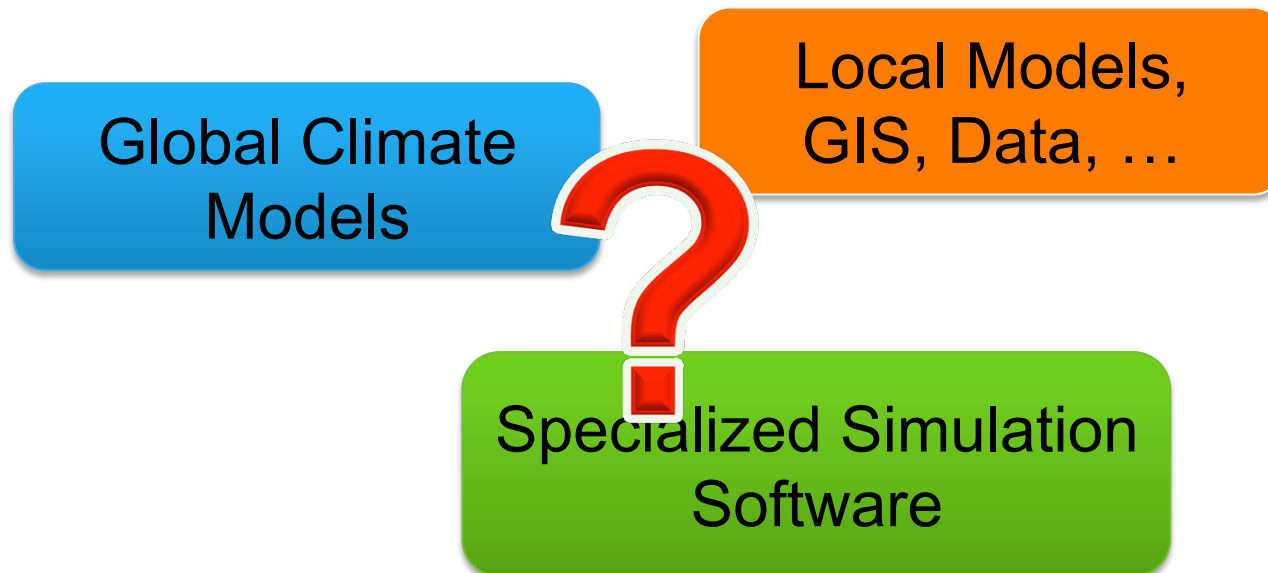


Dr. Frank Michel

German Research Center for Artificial Intelligence (DFKI) GmbH

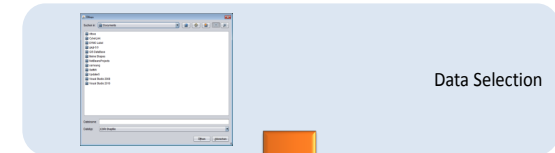
Kaiserslautern, Germany

- Complex information systems and workflows
- Heterogenous components and tools
- Not easy to use and understand for non-specialists

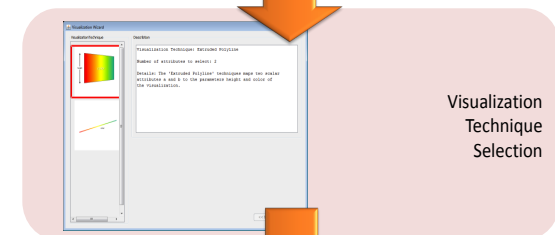


3D/4D Visualisation

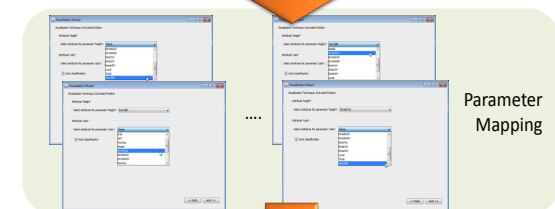
- **Globe based 3D Component (World Wind SDK)**
 - provides many standard GIS features
 - Geospatial service support
 - Comfortable navigation
- **Visualisation Wizard**
 - Select suitable visualisation techniques
 - Independence from data source
 - Extendable visualisation collection
 - Intelligent proposal
 - Simple user interaction



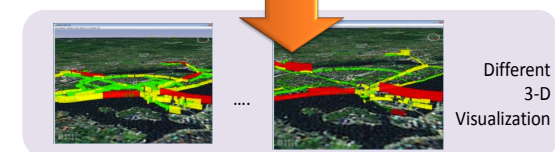
Data Selection



Visualization Technique Selection



Parameter Mapping



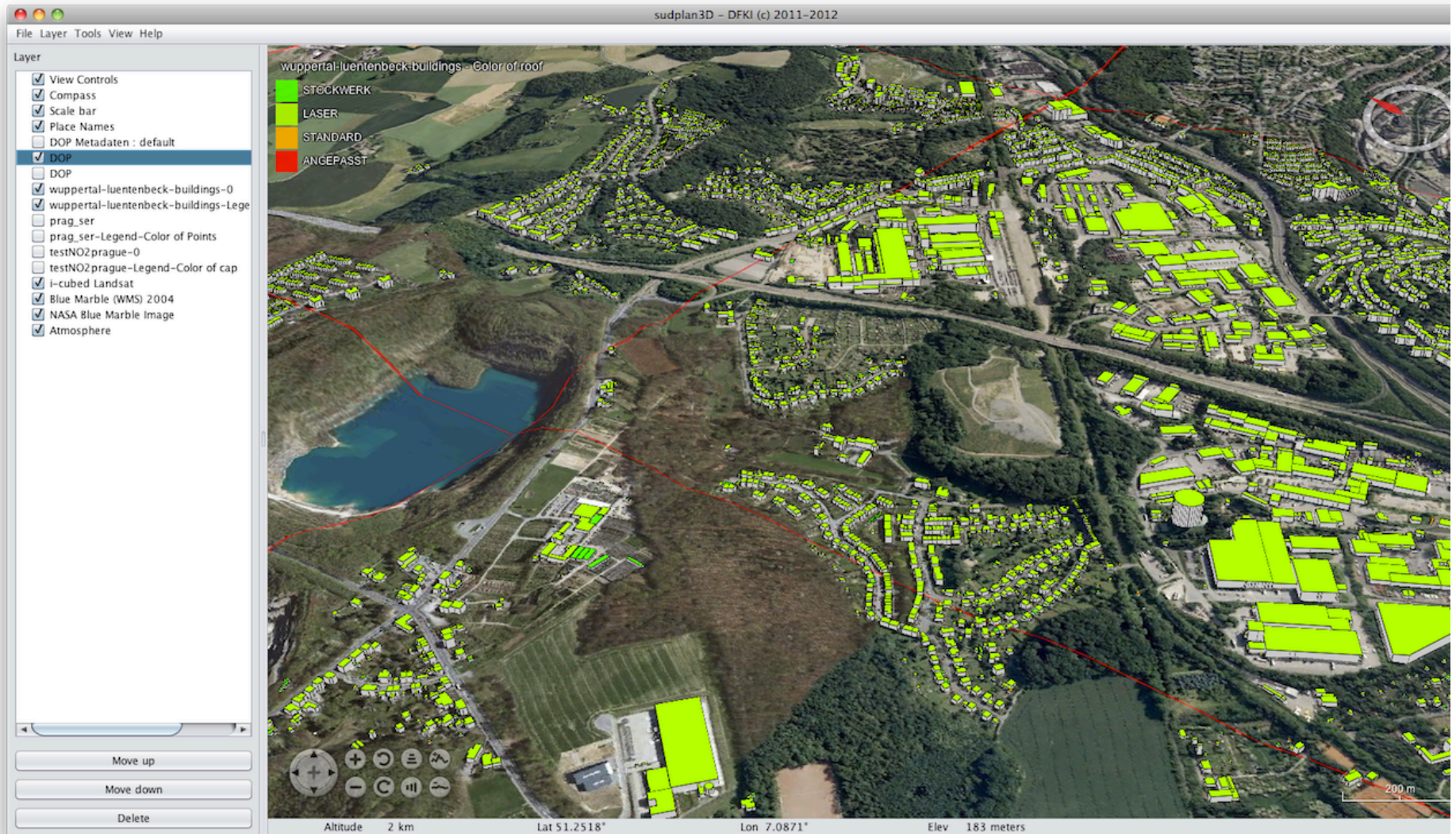
Different 3-D Visualization

Globe based 3D Visualisation

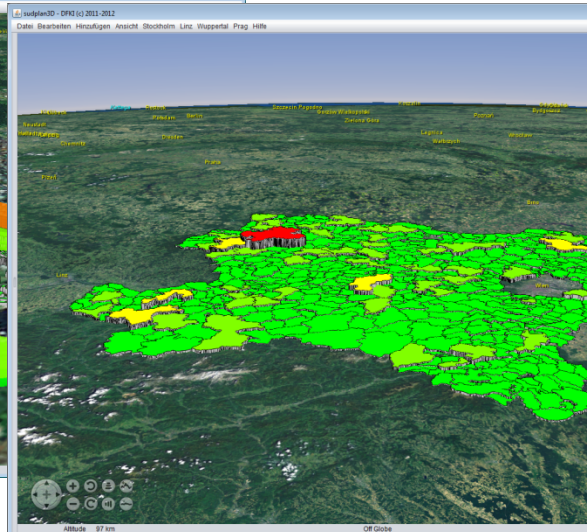
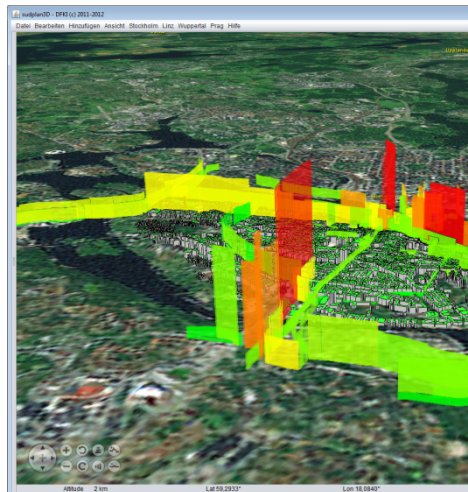
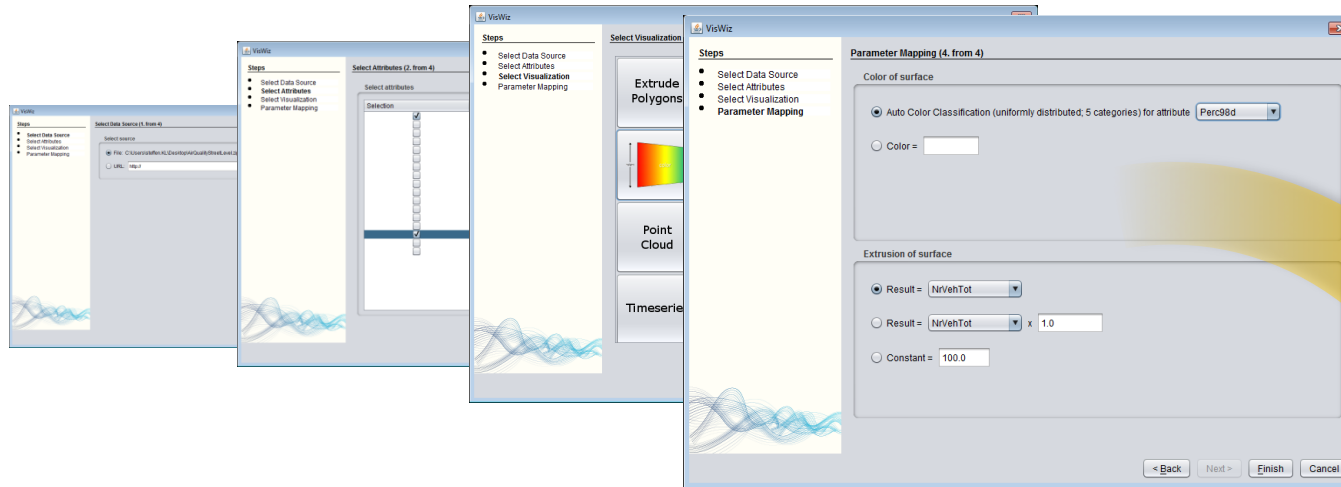


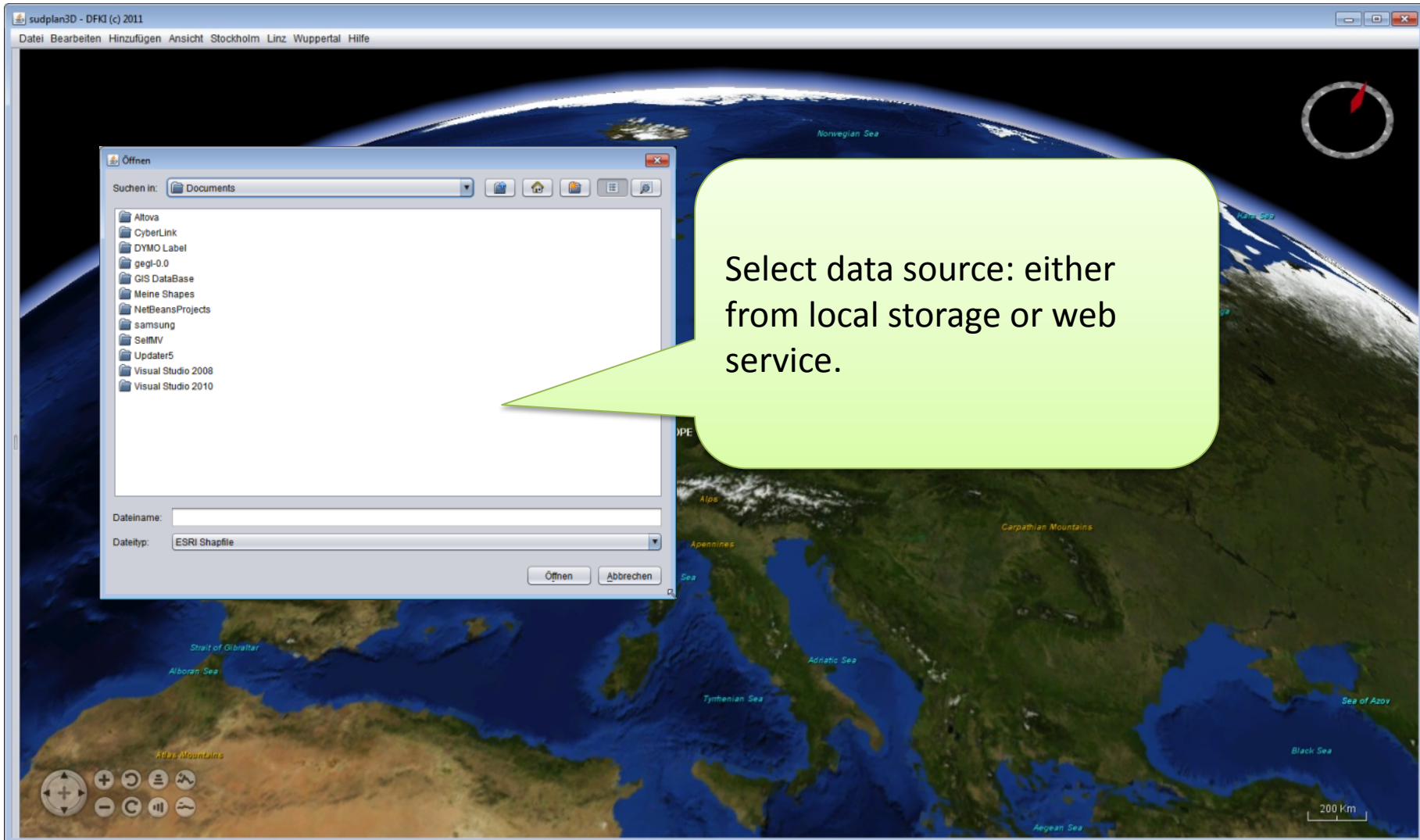
Globe based 3D Component

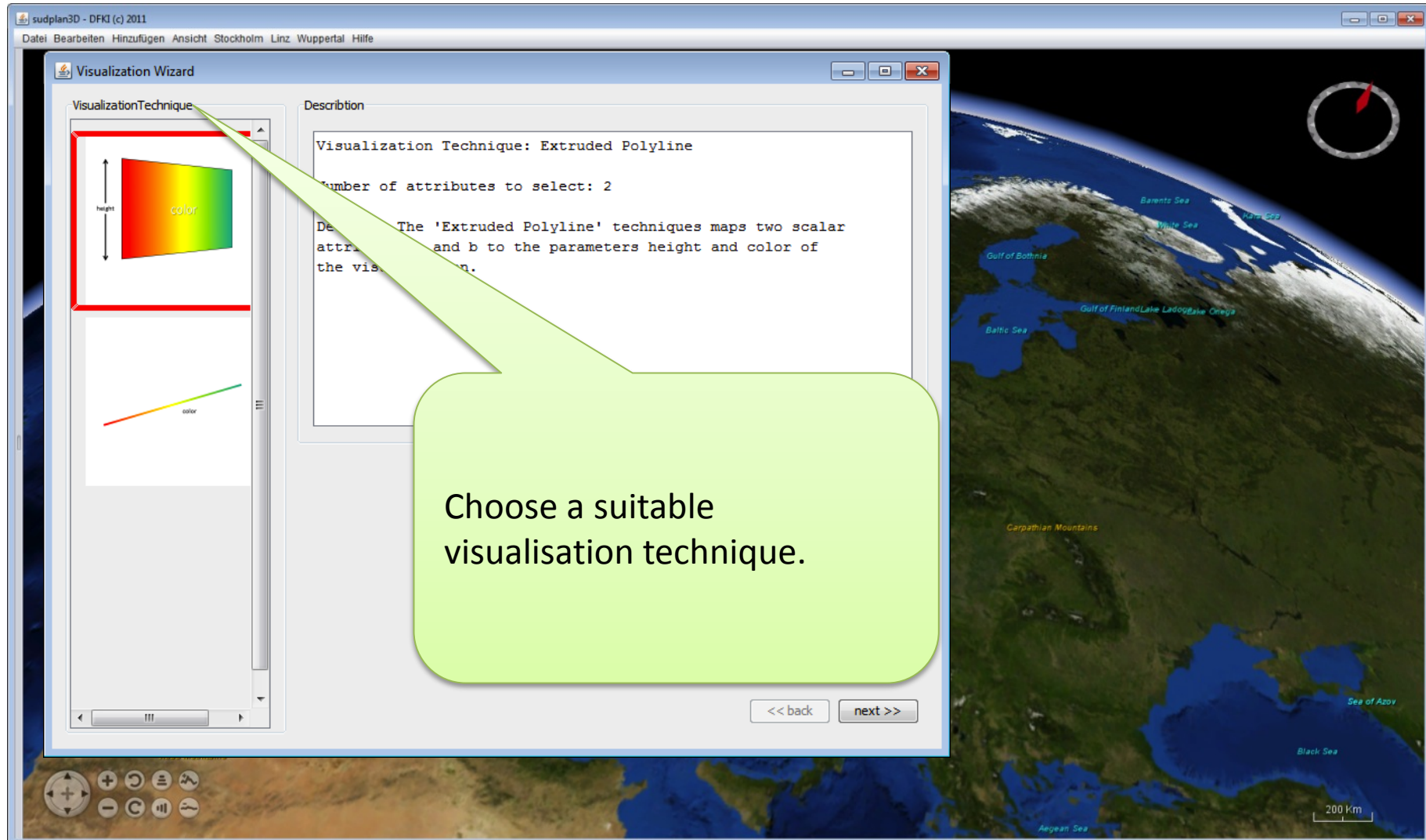
SUDPLAN



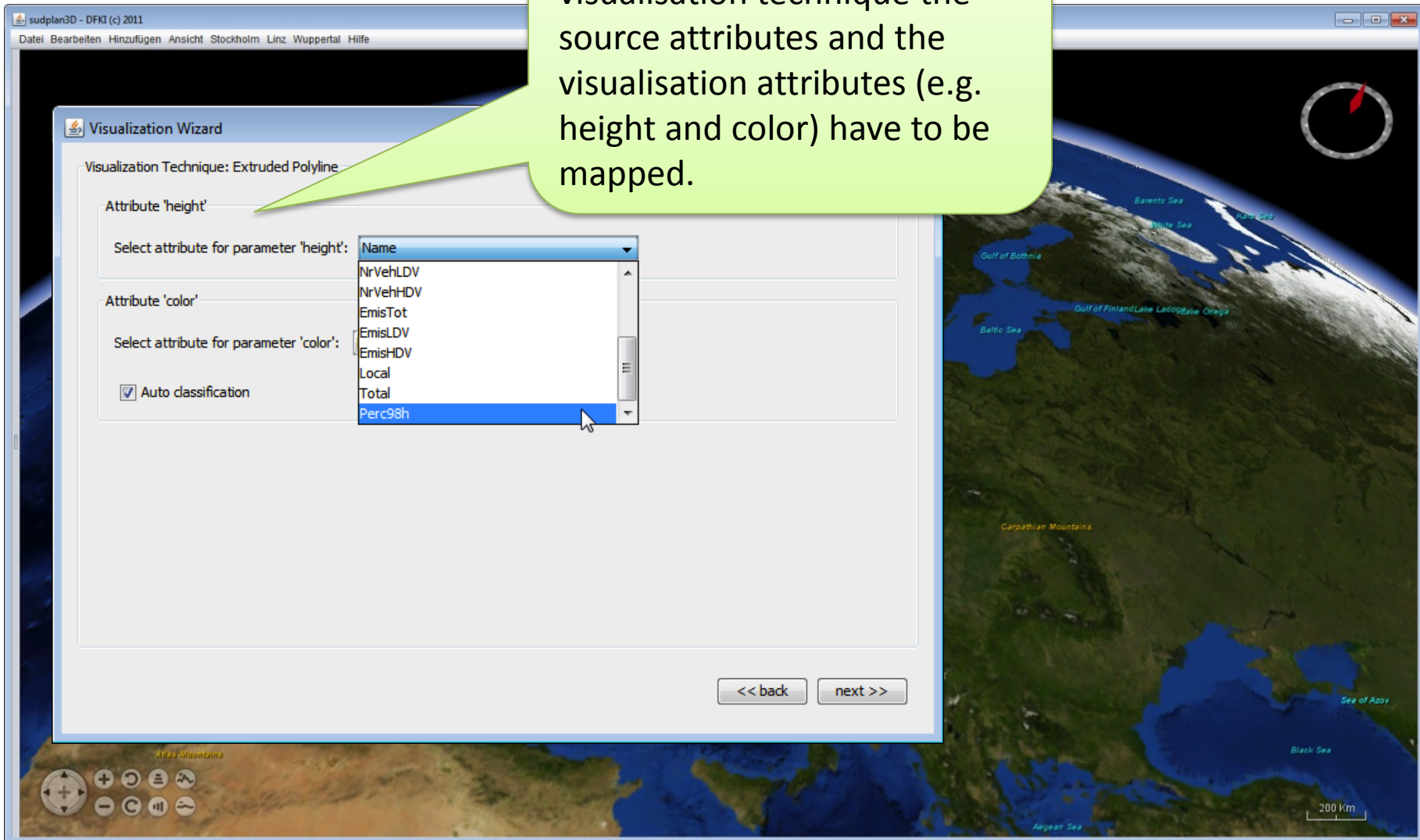
VisWiz - Flexible 3D Visualisation

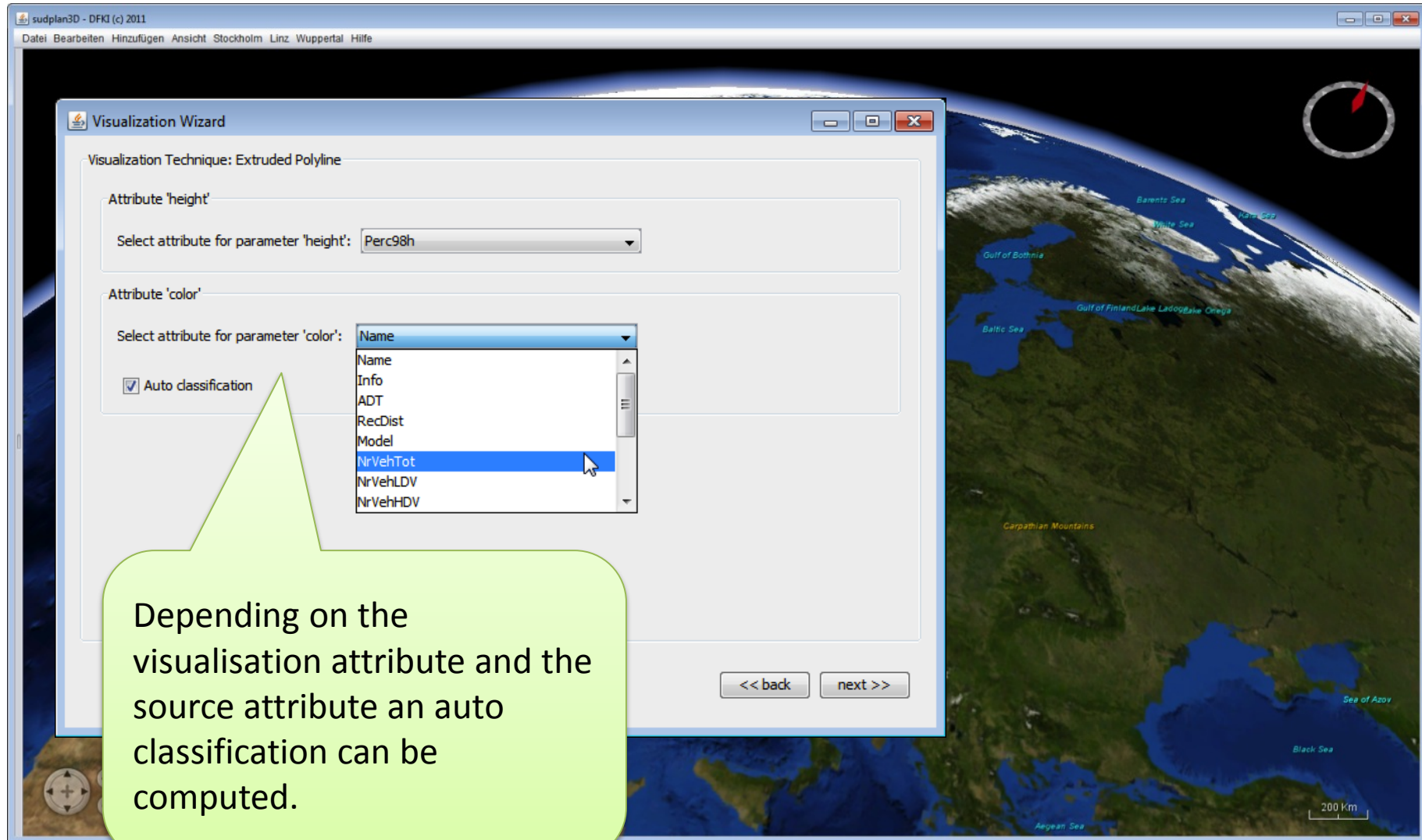


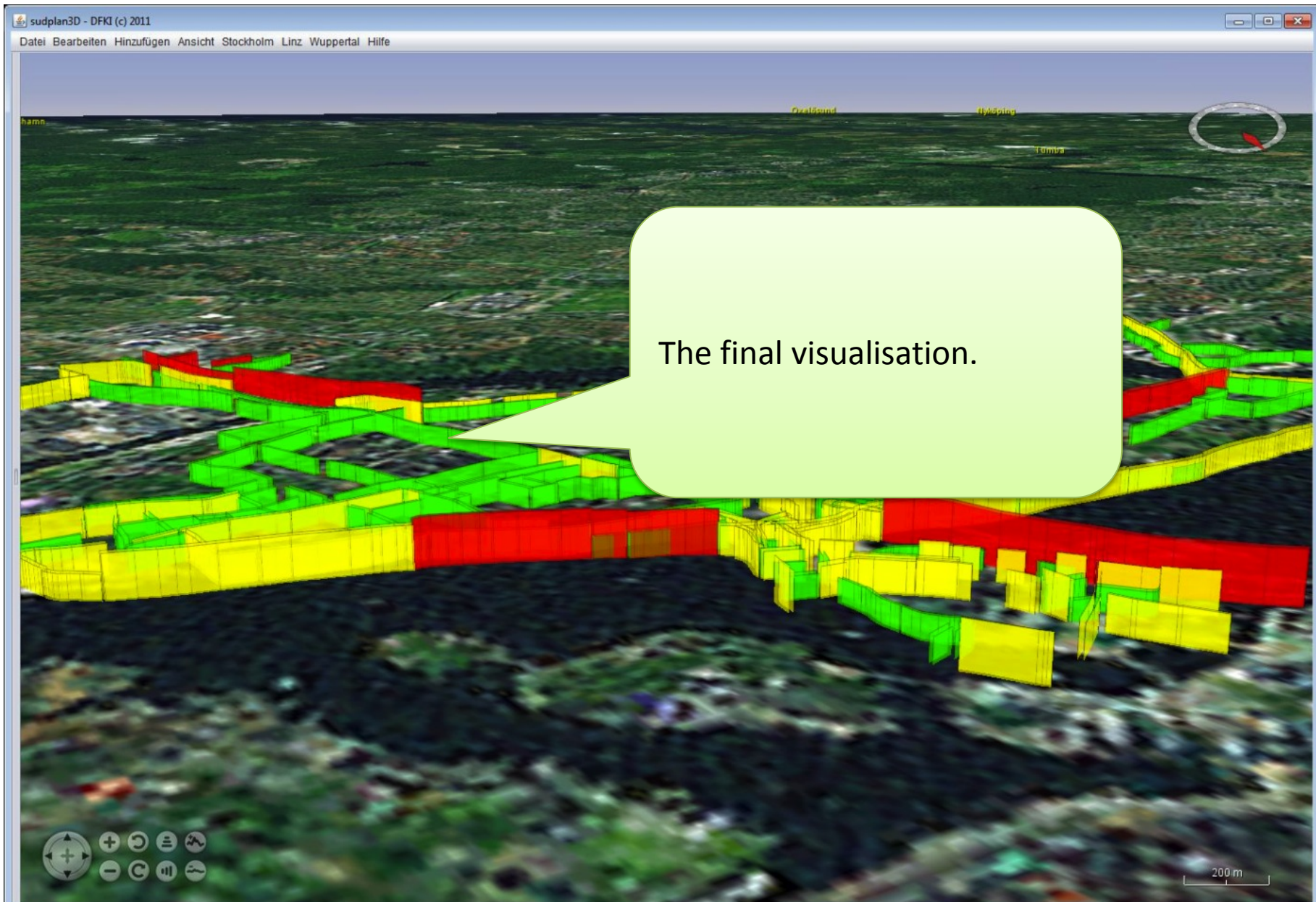




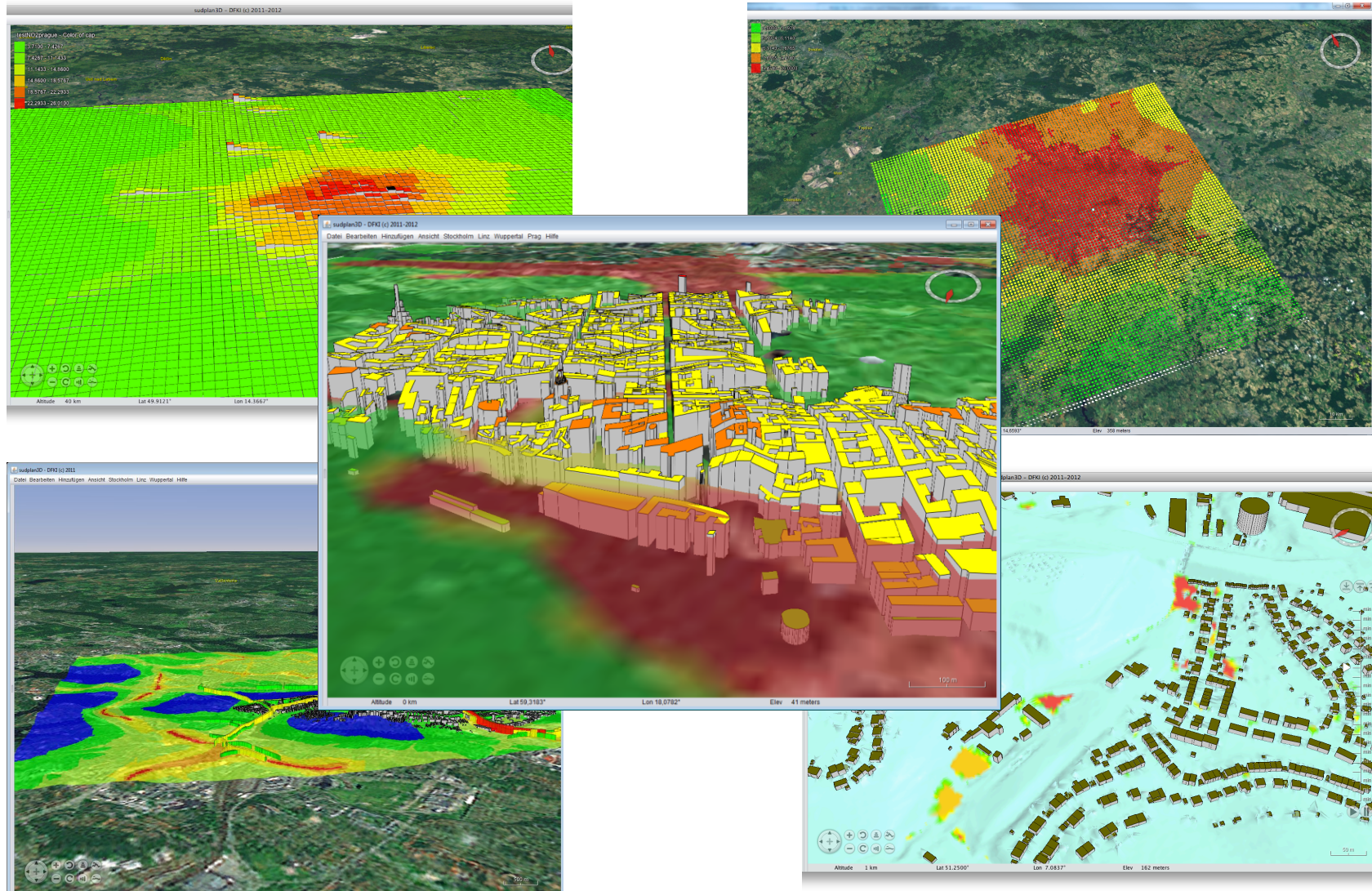
Depending on the selected visualisation technique the source attributes and the visualisation attributes (e.g. height and color) have to be mapped.

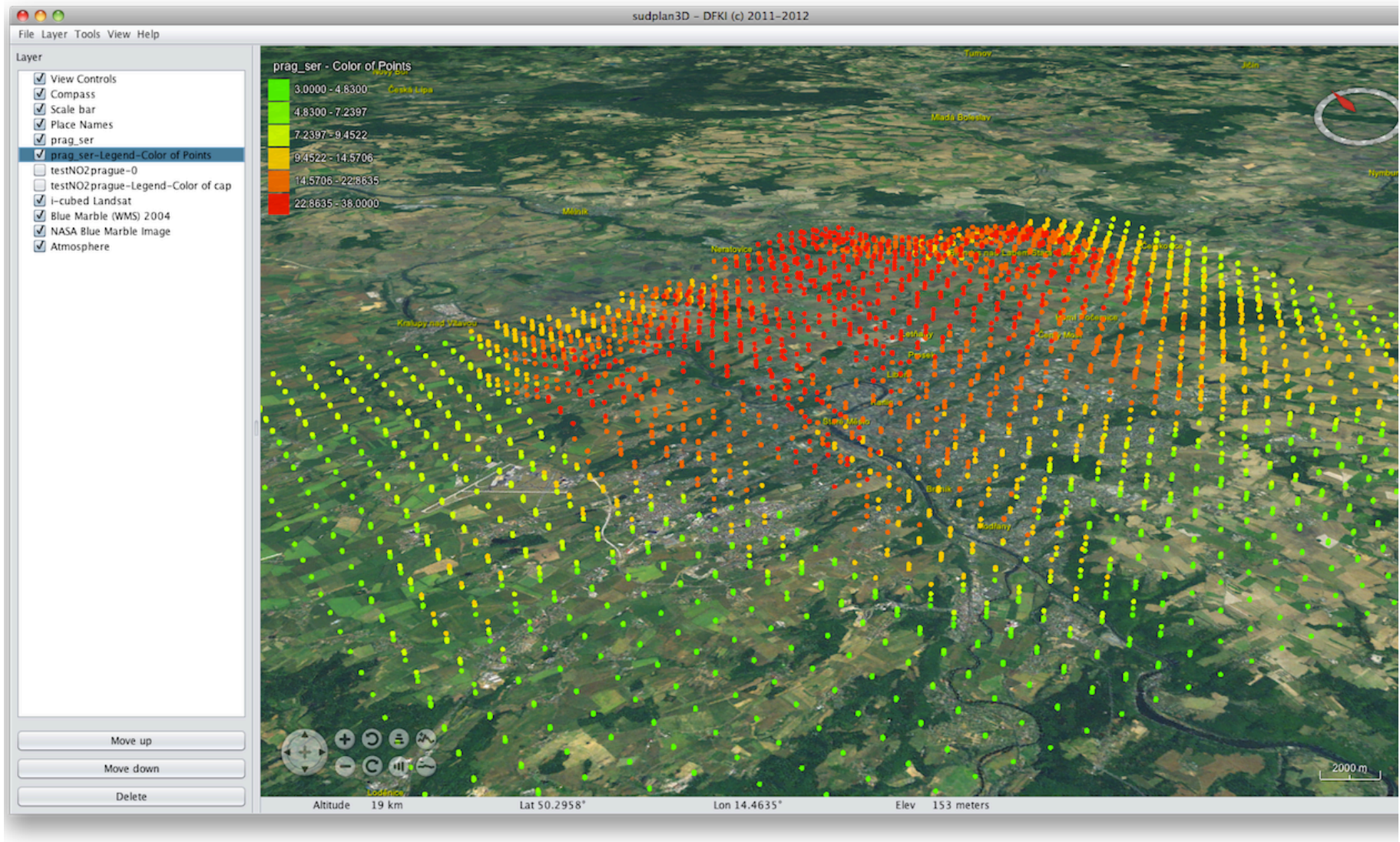


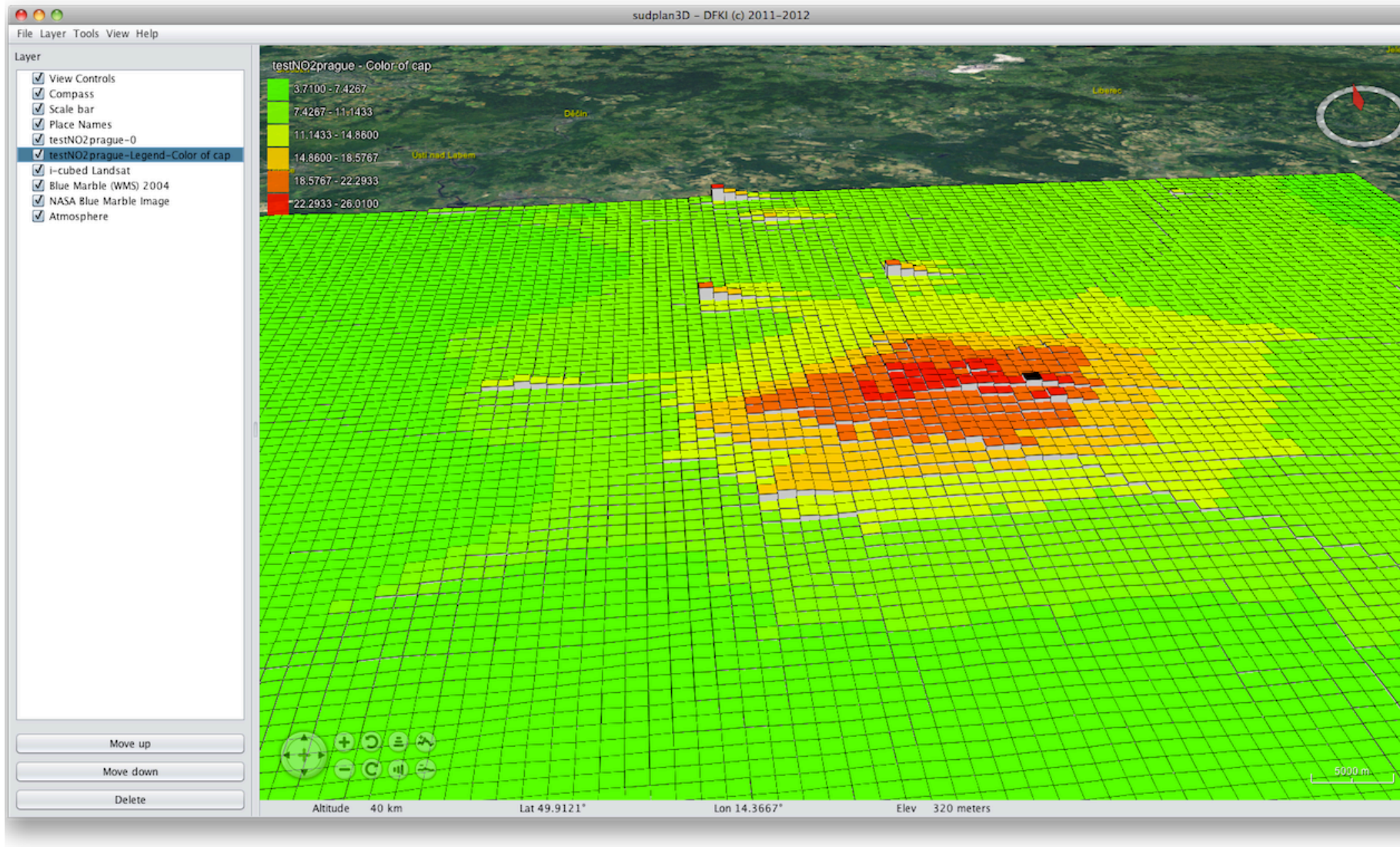


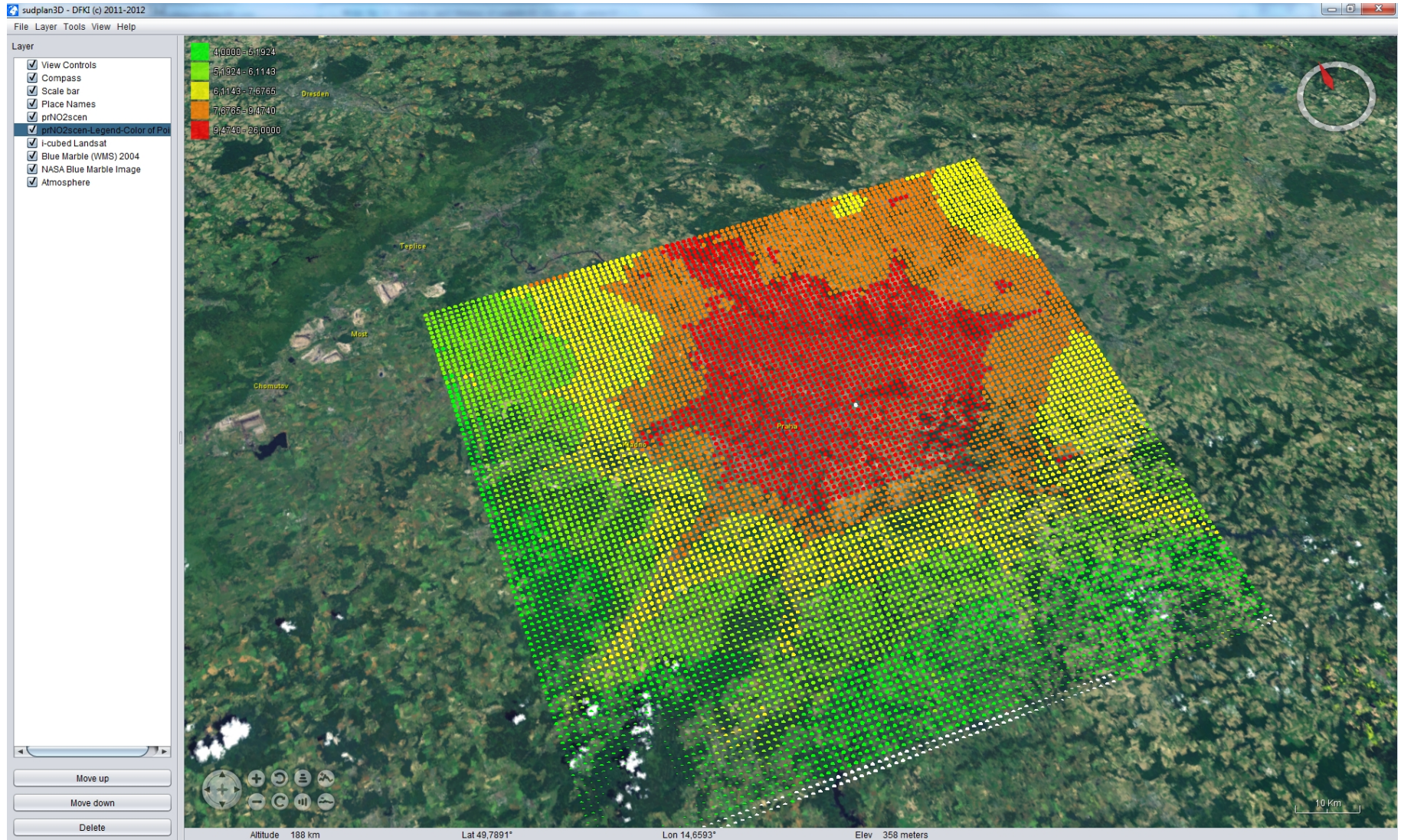


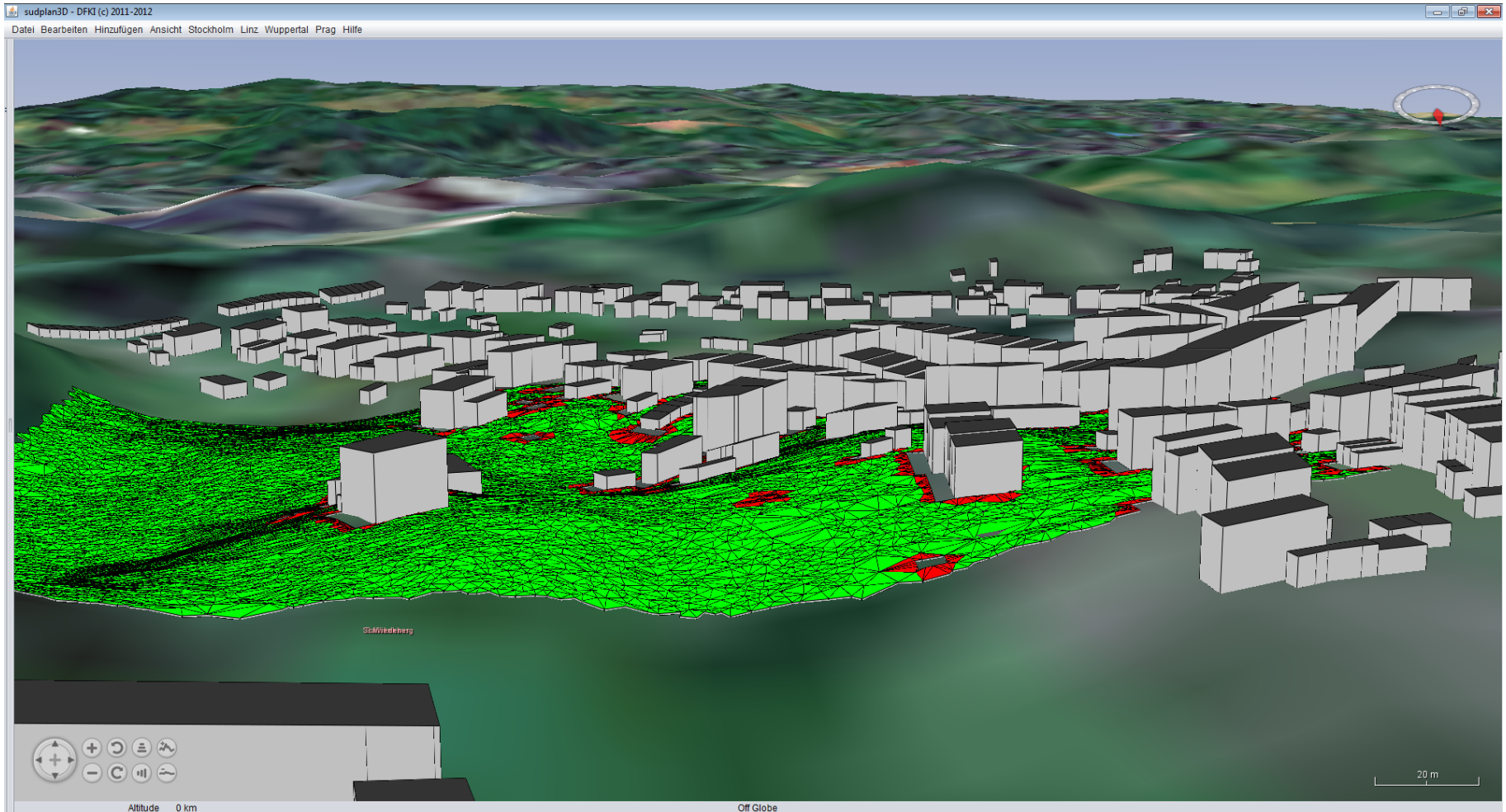
Advanced Visualisation

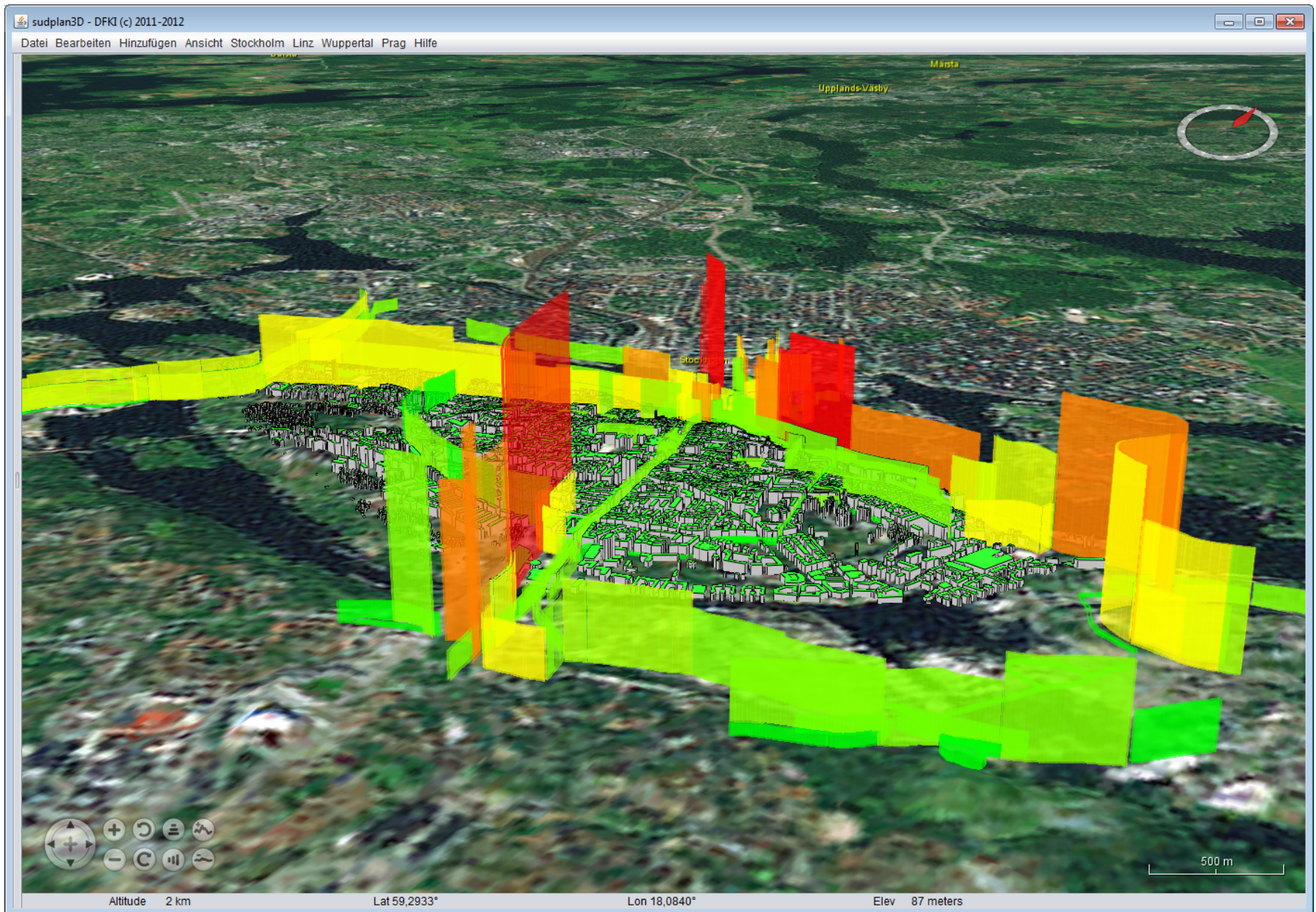


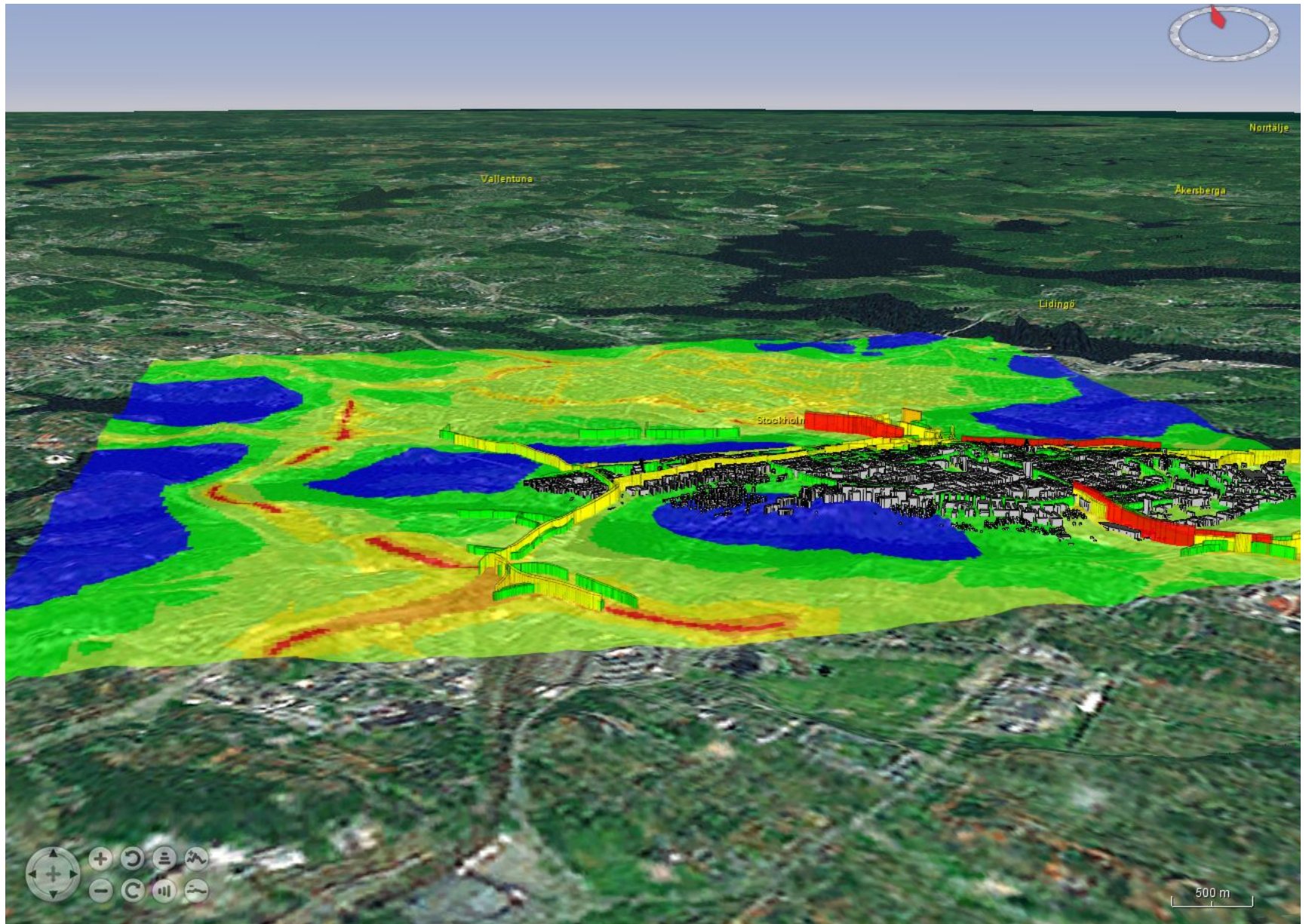


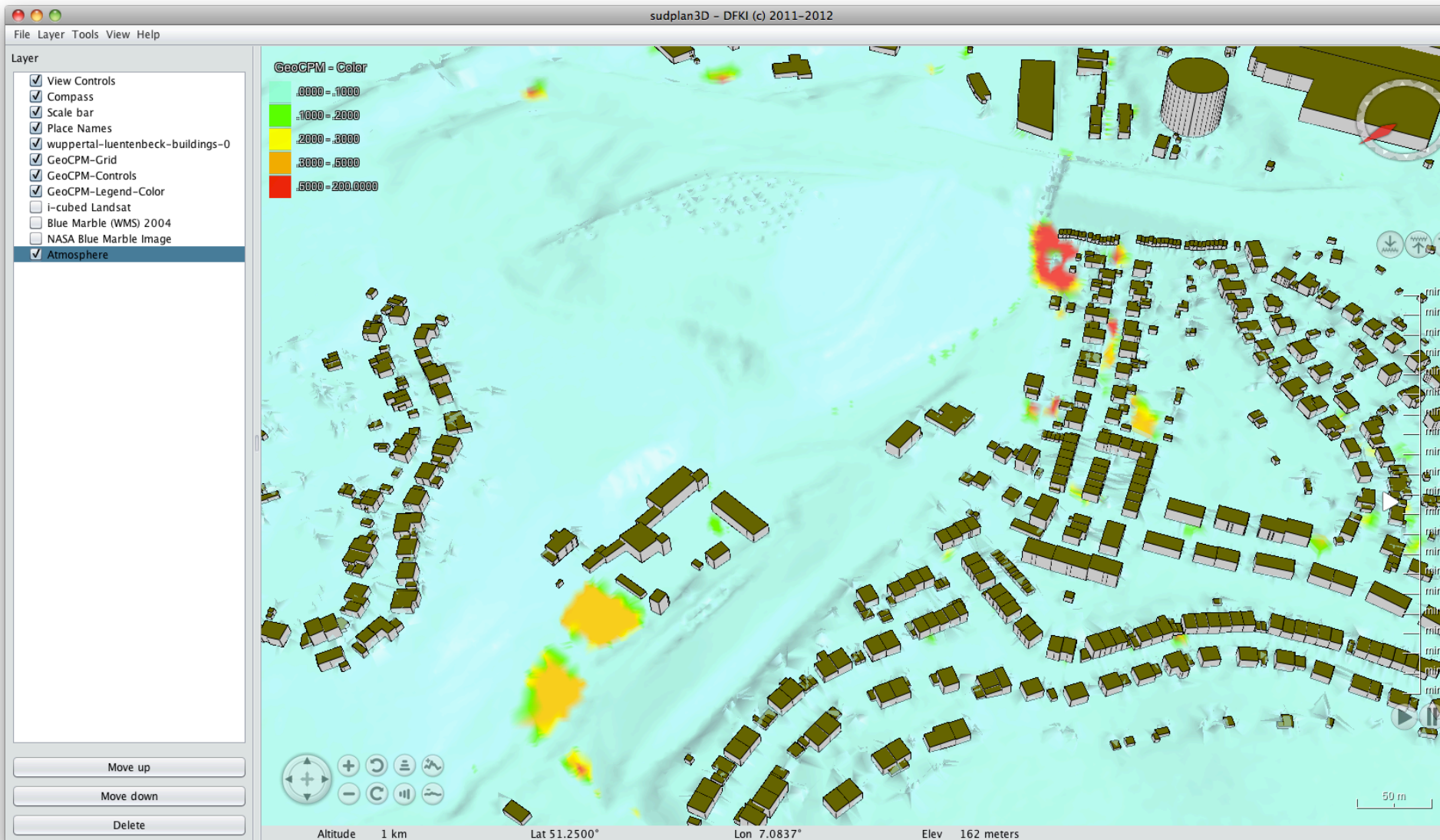


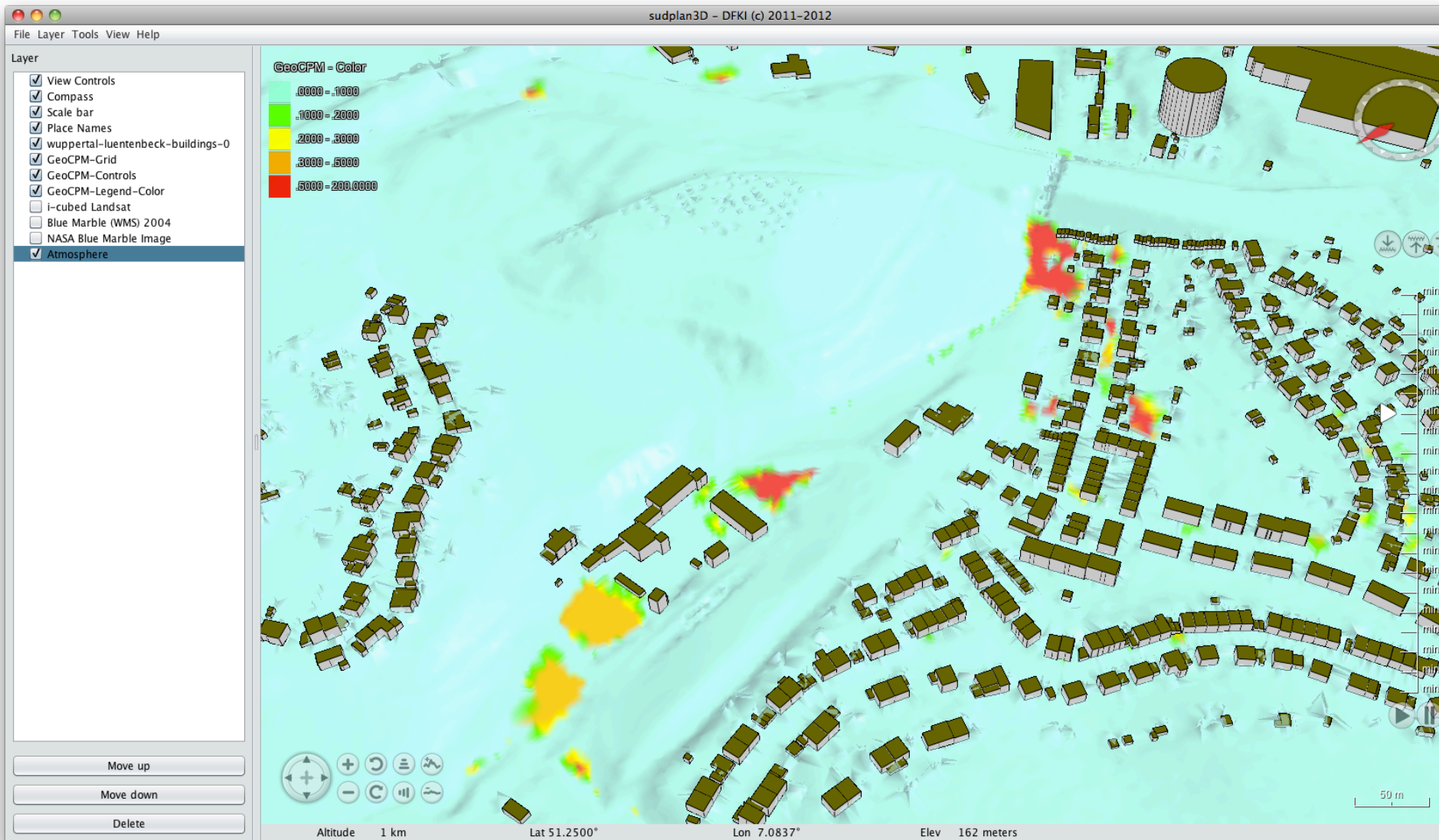












Join the Live Demo tomorrow!